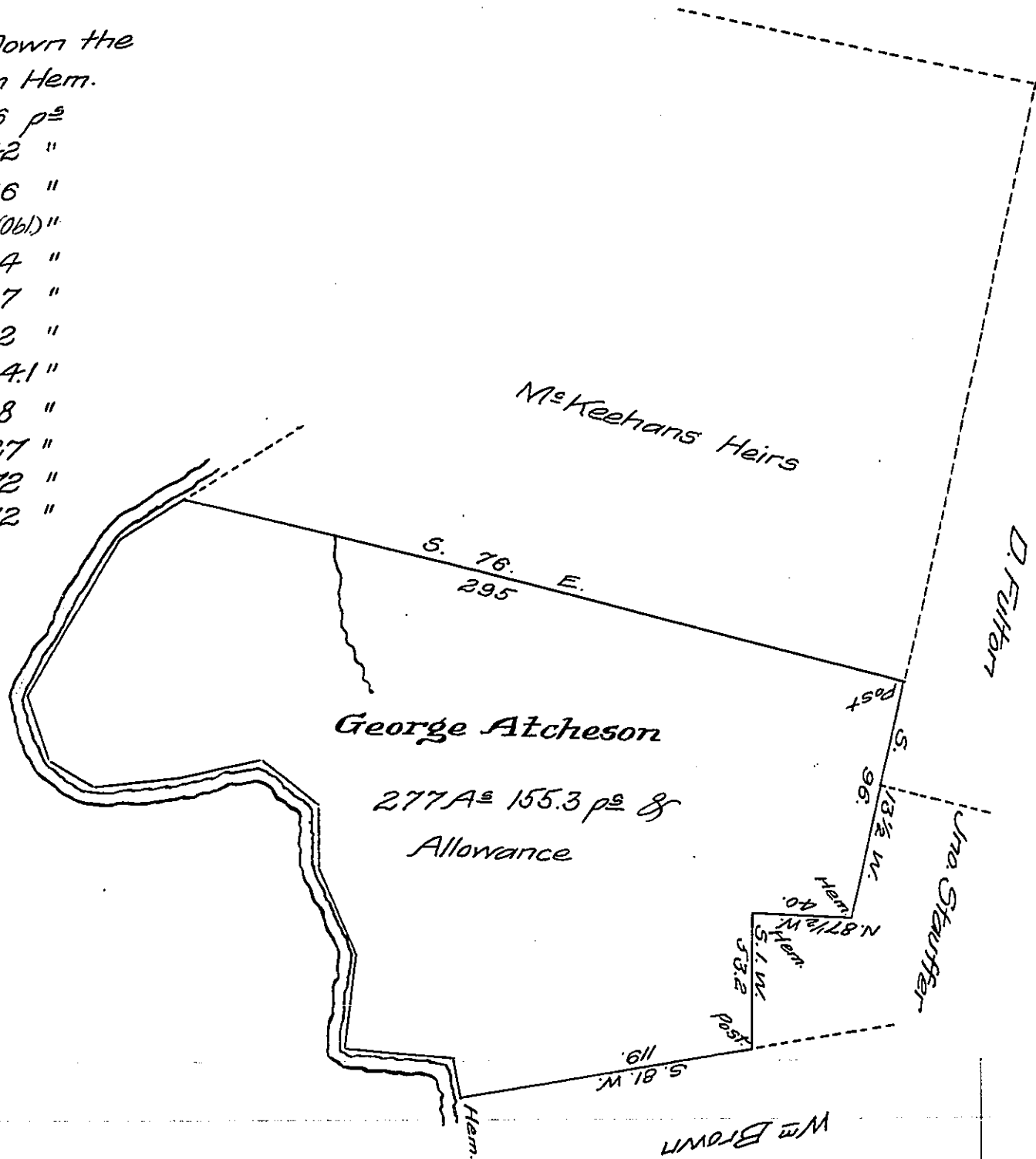


FORM NO. 1.

Courses Down the River from Hem.

- N. 10. W. 16 p^s
- N. 84. W. 42 "
- N. 6. E. 36 "
- N. 24. W. 3(061) "
- N. 2 W. 24 "
- N. 52 W. 27 "
- S. 78 W. 32 "
- S. 84 W. 34.1 "
- N. 60. W. 18 "
- N. 20. W. 27 "
- N. 30. E. 72 "
- N. 56 E. 32 "



Draft of two Hundred and Seventy Seven acres. One hundred & fifty five & three tenths perches and Allowance, of land in Burnside Tp. Clearfield Co. as resurveyed for George Atcheson. Jan'y 19th 1838. April 2^d 1867 and being part of a larger tract. Originally Surveyed, in pursuance of a Warrant Granted to George Atcheson Dated Dec. 13th 1837 for 400 acres.

S. F. McClosky C.S.

IN TESTIMONY that the above is a copy of the original remaining on file in the Department of Internal Affairs of Pennsylvania, made conformably to an Act of Assembly approved the 16th day of February 1833, I have hereunto set my hand and caused the Seal of said Department to be affixed at Harrisburg, this eighteenth day of October 1907.

Henry Howard

Secretary of Internal Affairs.